



2023 PERFORMANCE

# RXT<sup>®</sup>-X<sup>®</sup> RS 300

The ultimate off-shore performance watercraft.



## KEY FEATURES

- Rotax<sup>®</sup> 1630 ACE™ – 300 engine
- ST3 Hull™
- Launch control
- iDF – Intelligent Debris-Free Pump System
- Ergolock two-piece racing seat
- Tilt steering
- Full-length angled footwell wedges
- X-sponsons
- Tech Package (Optional): BRP Audio – Premium system and USB port

- Premium Triple Black
- Millennium Yellow

## CAPACITY

Rider Capacity	👤👤👤
Weight Capacity	600 lb/272 kg
Fuel Capacity	18.5 US gal/70 L
Glove Box	0.8 US gal/2.9 L
Front Bin	25.3 US gal/96 L
Storage Capacity – Total	26.1 US gal/98.9 L

## DIMENSIONS

Length (bumper to bumper)	135.9"/345.1 cm
Width	49.4"/125.5 cm
Height	45.2"/114.7 cm

## HULL

Type	ST3 Hull™
Material	Fiberglass

## OTHER FEATURES

- Seat strap
- iBR – Intelligent Brake & Reverse
- Extended VTS™ (Variable Trim System)
- RF D.E.S.S.™ key
- Watertight phone compartment
- LinQ<sup>®</sup> attachment system
- Knee pads
- Wide-angle mirrors
- Handle grips with palm rest
- Footwell carpets
- Large swim platform
- Ski tow eye

## ROTAX<sup>®</sup> ENGINE

1630 ACE™ – 300

Intake System	Supercharged with external intercooler
Displacement	1,630 cc
Cooling	Closed-Loop Cooling System (CLCS)
Reverse System	Electronic iBR**
Fuel Type	95 Octane
Throttle System	iTC™ (Intelligent Throttle Control)
Exhaust System	D-Sea-Bel™ system

## GAUGE

Type of Gauge	Large panoramic 7.8 wide LCD display optional (w/audio) 7.6 wide digital display (w/o audio)	
Main Functions	<ul style="list-style-type: none"> <li>• BRP Connect</li> <li>• Music</li> <li>• Weather</li> <li>• Bluetooth connectivity</li> <li>• Speedometer</li> <li>• RPM</li> </ul>	<ul style="list-style-type: none"> <li>• Clock</li> <li>• VTS™</li> <li>• Fuel consumption</li> <li>• Fuel autonomy</li> <li>• Speed statistics</li> <li>• Vehicle hours</li> </ul>
iTC System – Mode	<ul style="list-style-type: none"> <li>• Sport mode</li> <li>• ECO<sup>®</sup> mode</li> <li>• Slow mode</li> </ul>	<ul style="list-style-type: none"> <li>• Speed regulator</li> <li>• Launch control</li> </ul>

## WEIGHT

Dry Weight	829 lb/376 kg
------------	---------------

## WARRANTY

BRP limited warranty covers the watercraft for 2 Years.

\*Electronic brake, neutral and reverse.





## FEATURE HIGHLIGHTS



### Ergolock™ System

A narrow seat profile with deep knee pockets lets riders sit naturally and use the lower body to hold onto the machine for more control.



### BRP Audio – Premium System

The industry's first manufacturer-installed truly waterproof Bluetooth<sup>†</sup> audio system.



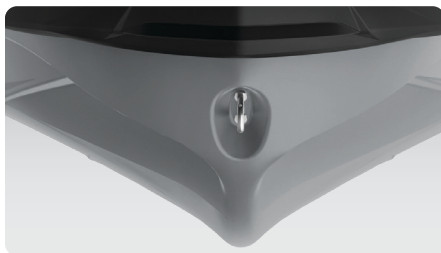
### Full-Color 7.8" Wide Display

Full-color display with incredible visibility and a new level of functionality. Bluetooth<sup>†</sup> and smartphone app integration provides music, weather, navigation and more.



### Rotax® 1630 ACE™ – 300 Engine

The Rotax 1630 ACE – 300 is the most powerful Rotax engine ever, delivering high efficiency and best-in-class acceleration.



### ST3 Hull™

An innovative hull that sets the benchmark for rough water handling, stability and offshore performance.



### iDF – Intelligent Debris-Free system

An innovative, industry-first system that allows you to free your pump of weeds and debris with intuitive handlebar-activated controls.

©2022 Bombardier Recreational Products Inc., (BRP). All rights reserved. ®, TM and the BRP logo are trademarks of Bombardier Recreational Products Inc. or its affiliates. All product comparisons, industry and market claims refer to new sit-down PWC with 4-stroke engines. Watercraft performance may vary depending on, among other things, general conditions, ambient temperature, altitude, riding ability and rider/passenger weight. Testing of competitive models done under identical conditions. Because of our ongoing commitment to product quality and innovation, BRP reserves the right at any time to discontinue or change specifications, price, design, features, models, or equipment without incurring any obligation. †Garmin is a trademark of Garmin Ltd. or its subsidiaries.